

We invite you...

The Australasian Society for Psychiatric Research is fast growing to be one of Australia and New Zealand's most important organisations representing researchers in the areas of psychology, psychiatry, mental health and population studies.

We invite you and your colleagues to join us.

Who we are

The Australasian Society for Psychiatric Research (ASPR) is Australasia's foremost society for psychiatric and mental health researchers. It was formed in 1978 by Scott Henderson, Issy Pilowsky, Graham Burrows and Peter Beumont, and in memory of their friend and colleague, Cecil Kidd.

It includes researchers from a range of disciplines (including psychiatrists, psychologists, statisticians, epidemiologists, neuroscientists, geneticists, social scientists, mental health nurses, health economists, and mental health consumer researchers) and provides them with an opportunity to come together to report on their most recent work, to stay abreast of developments in their own and related fields, to strengthen old collaborations and to develop new ones.

Our logo

The butterfly logo was first developed by one of the society's founders, Prof Issy Pilowsky. The butterfly is the symbol of Psyche and there is a variety of butterfly actually called Psyche. Prof Pilowsky thought a butterfly was also appropriate because "capturing our beautiful data is like capturing a butterfly; you have to be so careful that the methodology does not damage what makes it attractive!"

Membership costs:

Regular \$50

Concession \$30

(for members with an income under \$50,000/year)

Download a copy of our membership form from our website.

All communications regarding membership should be to be addressed to the administrator.

Administrator:

Mrs Elizabeth Horton
University of Melbourne Dept of Psychiatry
1 North, Main Block,
Royal Melbourne Hospital
PARKVILLE VIC 3050
Telephone: 61 3 8344 5663
Fax: 61 3 9349 2792
email ehorton@unimelb.edu.au

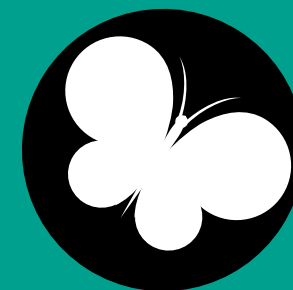
If you would like to join, or you would like more information about ASPR, please visit us on the web:

www.aspr.org.au

An invitation from
The Australasian Society for
Psychiatric Research

•A•S•P•R•

www.aspr.org.au



Australasia's society for multidisciplinary
mental health research

The Objectives of ASPR

The primary objectives of the Society are to:

1. to provide a multidisciplinary Australasian forum for the presentation and discussion of psychiatric and mental health research;
2. to assist psychiatric and mental health researchers to remain informed about the latest research developments in Australasia;
3. to facilitate dialogue between researchers from different disciplines who undertake psychiatric and mental health research, and research cognate to this endeavour;
4. to provide methodological support to those involved in psychiatric and mental health research;
5. to strengthen existing collaborations and support the development of new collaborations both among Australasian psychiatric and mental health research workers, and with researchers outside of Australasia;
6. to encourage undergraduate training programs and take steps to ensure that such programs are both appropriate and adequate;
7. to facilitate dialogue and interaction between researchers from different disciplines who undertake psychiatric research or research germane to this endeavour.
8. to cooperate with other organizations, including but not limited to the Royal Australian and New Zealand College of Psychiatrists and the tertiary education sector, in the maintenance of high standards of psychiatric and mental health teaching and research;
9. to lobby for adequate funding for psychiatric and mental health research;
10. to ensure psychiatric and mental health perspectives are considered in the development of health policy and the provision of health services.

Annual Conference

Our major activity each year is a scientific meeting held in the first week of December. ASPR believes in recognising and rewarding excellence in psychiatric research and to facilitate this we offer a number of awards each year.*

- The Founders' medal – this medal is named for the four founders of ASPR, and is given to a member each year who has made a lifetime contribution of great significance to the field.
- The Eli Lilly Oration Award – this oration is made at the scientific meeting each year by a member who is prominent or rising to prominence in the scientific community. The prize includes \$5000 towards the person's research and expenses to attend the conference.
- The Organon Award – this is awarded each year to a member on the basis of early career performance. Usually awarded to a member under the age of 35, it may also be awarded to an early career researcher.
- Consumer-researcher award – this award includes expenses for travelling to the conference.
- Awards are given to the Best Debut Presentation and best poster presentation each year. These carry a cash prize of \$250.

Up to 10 grants-in-aid are provided to early career researchers (PhD and Masters' students, research assistants and people starting a research career for the first time).

**Conditions apply to awards and scholarships. Please read the website for further information.*

Program for Early Career Researchers

ASPR also believes in fostering the talent of early career researchers. These include PhD and Masters' students, research assistants and people starting a research career for the first time because of a work break or move from clinical or other settings. There is no limit on age – the chances are that if you think you are an early career researcher, you are.

Incentives to help boost the careers of early career researchers include:

- A mentoring program, commencing at the beginning of each year, enabling an early researcher to gain insight into building a successful career through contact with a senior researcher.
- The ASPR Early Career Scholarship, providing an early career researcher with funding to attend and present at a conference overseas.

ASPR is committed to continuing to develop initiatives to help the careers of early career researchers, and is pleased to hear the suggestions of its members.

See the Early Career Researchers page on our website for further information and contacts

ASPR is formally affiliated with

- Australian Society for Medical Research
- Mental Health Council of Australia
- Collegium Internationale NeuroPsychoPharmacologicum